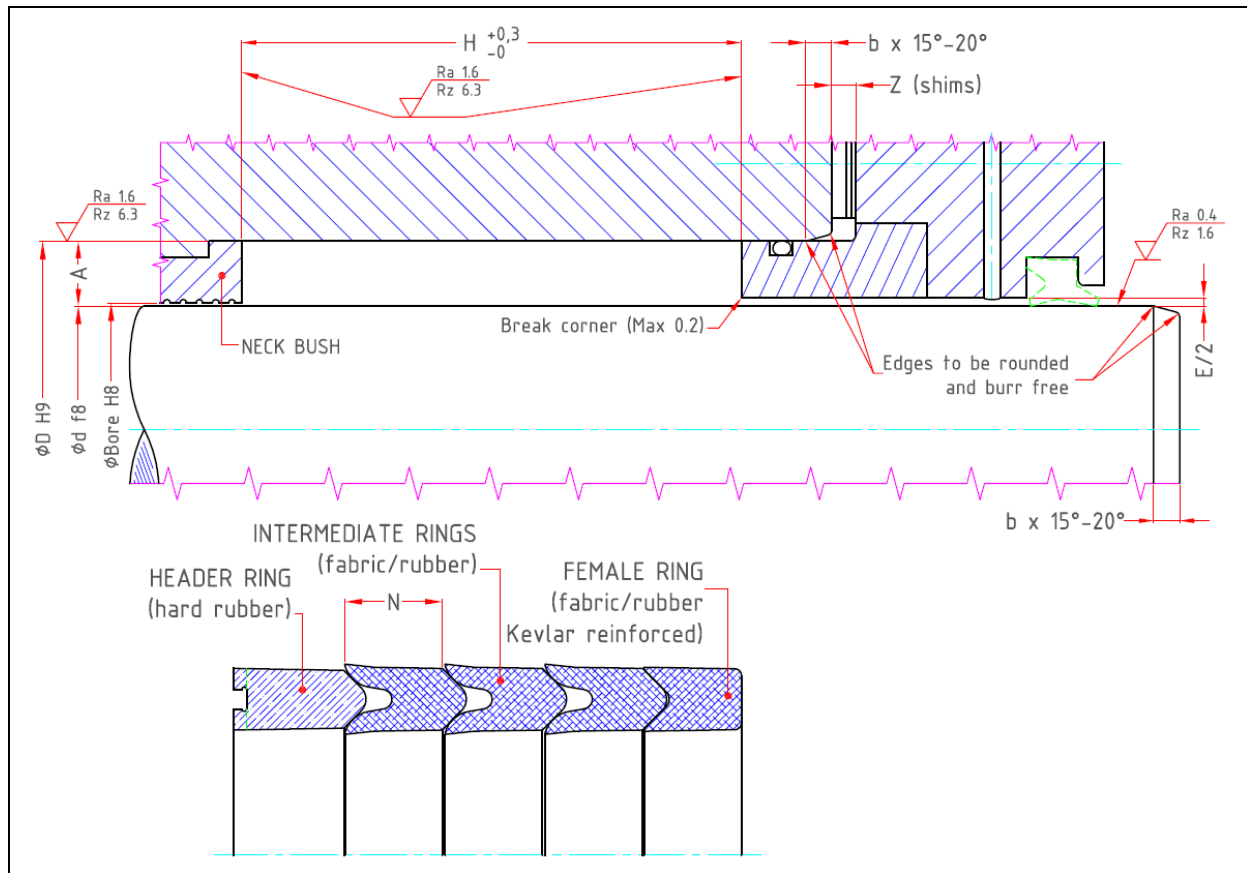


CARCOTEX/SP

V-packing made of rubber proofed fabric for ROD sealing in Heavy-Duty applications



Carcotex/SP is our exclusive multi-lip hydraulic packing suitable for heavy duty applications, adverse mechanical conditions and long useful lifetime. Thanks to its extremely robust design, Carcotex/SP can withstand large side loads and high pressure peaks. This type of seal is typically used as rod seal in heavy duty hydraulic cylinders and machineries like forging and extrusion presses. Carcotex/SP can be used also as Piston seal. In this case we recommend to verify the application with our technical department.

Carcotex/SP is composed by intermediate V-rings with large cross section made in rubber proofed fabric, a female ring (called also pressure or gland ring), which is extremely resistant to extrusion, made in rubber proofed fabric with Kevlar and a male ring (called also header or support ring) made in hard rubber to provide the required axial compression.

Initial sealing is provided by the pre-load produced by the axial clamping force generated when the gland is tightened to close the seal to the design stack height. Spacers (shims) are used to adjust the stack height as necessary to guarantee the static sealing or compensate for seal wear.

Carcotex/SP provides the following benefits compared to the other hydraulic sealing solutions:

- Multi-lip seal which provides multi contact point. For this reason, Carcotex/SP is usually supplied in split version ensuring a very good sealing performance and reducing dramatically the machine shut-down costs.
- The rubber proofed fabric construction can withstand high radial load and thanks to the honeycomb fabric structure, which creates oil pockets, the friction forces are reduced.
- The hard rubber header acts as spring assuring a constant pre-load and providing a degree of compensation for wear. The header can be easily machined to achieve any requested housing length.
- Extremely high extrusion resistant materials for the female ring: rubber proofed cotton fabric with Kevlar reinforcement (standard material) or as alternative Nylon or PTFE ring. Available also a self-aligning version (SA) or a corner reinforced version (BU).
- Header and female rings are usually supplied in split version to give correct alignment to the adjacent intermediate V-rings.
- Carcotex/SP does not shrink even in case of very long storage time. For this reason Carcotex/SP is supplied "ready for fitting" and it does not require any trimming of the intermediate V-rings before fitting.
- Fitting instructions are supplied with every seal. A certificate stating the "Fitting Height" is also provided to prevent excessive axial compression and wear.
- On request the "Carcoflon" coating treatment can be applied on the dynamic side of the V-rings to avoid stick slip effect during the first runs and to give an appreciated friction reduction.

Materials and working conditions

Material Designation	Material Description	Working Temperature (°C)	Peak Temperature (°C)	Max. Speed (m/s)	Max. Pressure (bar)
S800	NBR/Cotton	-20 ÷ +100	-30 / +120	0.7	630
HT700	HNBR/Cotton	-30 ÷ +140	-40 / +160	0.7	630
S890 *	NBR/Kevlar	-20 ÷ +100	-30 / +120	0.7	630
S800K *	NBR/Cotton/Kevlar	-20 ÷ +100	-30 / +120	0.7	630

*Optional materials for very worn machines. For these materials we recommend to consult our technical department.

The above stated working limits are not an indication that these values can be applied simultaneously. The max. speed can be applied only in case of low frequency cycling.

For large extrusion gap the female ring can be supplied in different versions:

- Corner reinforced (BU) female ring
- Self-aligning (SA) Nylon female ring
- Nylon (B.NY) or Teflon (B.PTFE) female ring
- Additional Nylon back-up ring

Installation and hardware requirements

Carcotex/SP is designed to work in a housing with adjustable length.

The housing with adjustable length gives the advantage of an optimal compression and low friction. After long working time, if the V-packing starts leaking, the optimal axial compression can be recovered by the reduction of the housing length. To adjust the housing length we recommend the use of multiple metal shims with a total thickness $Z = H \times 0.12$, which means a re-adjustability level of 12 % of the housing length.

Carcotex/SP is recommended with 3 or 4 intermediate V-rings. Less V-rings can cause premature leakage in the split versions and too many V-rings can cause an excess of friction forces.

Carcotex/SP is usually supplied in split version (all the rings are open). The advantage of this version is that in the event of a repair and replacement of the seal no major erection work is required. In case an endless V-packing is specified, only the sealing elements (intermediate V-rings) are endless, unless otherwise specified.

An adequate cross-section dimensioning is necessary to compensate machining tolerances and wear in large machineries. Here below the recommended cross-section are listed in relation to the rod diameter.

Extrusion clearance

The gap between the rod and the inside circumference of the gland follower must be as small as possible. Clearance larger than the maximum permissible values here indicated in the table can cause the extrusion of the female ring with the consequent failure of the sealing system. For larger values pls. contact our tech. department.

Recommended cross section and chamfer requirements

Shaft Ød (mm)	A (mm)	b x 15° ÷ 20° (mm)
80÷140	12,5	6,2
100÷350	15	7,5
200÷1000	20	10
500÷1500	25	12,5
> 1000	30	15

A (mm)	Max. extrusion clearance E (mm)	
	0 – 300 bar	300-630 bar
12,5	0,45	0,35
15	0,55	0,40
20	0,70	0,55
25	0,90	0,70
30	1,10	0,90

V-Packing composition and housing length

Carcotex/SP is usually supplied with 3 to 4 intermediate V-rings. The use of more than 4 intermediate V-rings is not recommended due to the increase of the friction forces.

By machining the male adapter CARCO can produce V-packing for different housing lengths within the limits listed in the following table:

A (mm)	Housing length range (mm)						N
	1+2+1		1+3+1		1+4+1		
	H min	H max	H min	H max	H min	H max	
12,5	65	85	85	105	105	125	20
15	80	100	100	125	125	150	25
20	90	125	125	155	155	185	30
25	125	165	165	205	205	245	40
30	130	175	175	220	220	265	45

Denomination

Carcotex/SP/(SPLIT)/S800 900,0/950,0 x 200,0

- Housing nominal dimensions
- Material
- Split version is indicated, otherwise endless
- Seal model.

Note: All data and information in this data-sheet is based upon years of experience in the manufacture and application of sealing element and is given in good faith. In spite of all efforts on our part, suggestions included here cannot be regarded as generally binding because of the various unknown factors which arises in particular application. Data are subject to change without notice. The operating limits indicated in the data-sheet are given as indication and have to be verified in case of concomitance.

CARCOTEX/SP - DIMENSIONAL TABLE

The dimensional table is referred to the standard metric sizes in split version.

H¹ or H²: alternative standard housing lengths. By machining the male adapter other housing lengths are achievable. As alternative an additional back-up ring can be used to get a different housing length.

Other dimensions, imperial sizes or endless seals are available. Pls. contact our sales office for the endless version or for a non-listed size.

Ød	ØD	A	b	1+2+1		1+3+1		1+4+1		N
				H ¹	H ²	H ¹	H ²	H ¹	H ²	
80	105	12,5	6,2	60	80	80	100	100	120	20
85	110	12,5	6,2	60	80	80	100	100	120	20
90	115	12,5	6,2	60	80	80	100	100	120	20
95	120	12,5	6,2	60	80	80	100	100	120	20
100	125	12,5	6,2	60	80	80	100	100	120	20
100	130	15	7,5	90	100	115	125	140	150	25
105	130	12,5	6,2	60	80	80	100	100	120	20
105	135	15	7,5	90	100	115	125	140	150	25
110	135	12,5	6,2	60	80	80	100	100	120	20
110	140	15	7,5	90	100	115	125	140	150	25
115	140	12,5	6,2	60	80	80	100	100	120	20
115	145	15	7,5	90	100	115	125	140	150	25
120	145	12,5	6,2	60	80	80	100	100	120	20
120	150	15	7,5	90	100	115	125	140	150	25
125	150	12,5	6,2	60	80	80	100	100	120	20
125	155	15	7,5	90	100	115	125	140	150	25
130	155	12,5	6,2	60	80	80	100	100	120	20
130	160	15	7,5	90	100	115	125	140	150	25
135	160	12,5	6,2	60	80	80	100	100	120	20
135	165	15	7,5	90	100	115	125	140	150	25
140	165	12,5	6,2	60	80	80	100	100	120	20
140	170	15	7,5	90	100	115	125	140	150	25
145	175	15	7,5	90	100	115	125	140	150	25
150	180	15	7,5	90	100	115	125	140	150	25
155	185	15	7,5	90	100	115	125	140	150	25
160	190	15	7,5	90	100	115	125	140	150	25
165	195	15	7,5	90	100	115	125	140	150	25
170	200	15	7,5	90	100	115	125	140	150	25
175	205	15	7,5	90	100	115	125	140	150	25
180	210	15	7,5	90	100	115	125	140	150	25
185	215	15	7,5	90	100	115	125	140	150	25
190	220	15	7,5	90	100	115	125	140	150	25
195	225	15	7,5	90	100	115	125	140	150	25
200	230	15	7,5	90	100	115	125	140	150	25
200	240	20	10	110	120	140	150	170	180	30
205	235	15	7,5	90	100	115	125	140	150	25
205	245	20	10	110	120	140	150	170	180	30
210	240	15	7,5	90	100	115	125	140	150	25
210	250	20	10	110	120	140	150	170	180	30
215	245	15	7,5	90	100	115	125	140	150	25
215	255	20	10	110	120	140	150	170	180	30
220	250	15	7,5	90	100	115	125	140	150	25
220	260	20	10	110	120	140	150	170	180	30
225	255	15	7,5	90	100	115	125	140	150	25
225	265	20	10	110	120	140	150	170	180	30
230	260	15	7,5	90	100	115	125	140	150	25
230	270	20	10	110	120	140	150	170	180	30

CARCOTEX/SP - DIMENSIONAL TABLE

The dimensional table is referred to the standard metric sizes in split version.

H¹ or H²: alternative standard housing lengths. By machining the male adapter other housing lengths are achievable. As alternative an additional back-up ring can be used to get a different housing length.

Other dimensions, imperial sizes or endless seals are available. Pls. contact our sales office for the endless version or for a non-listed size.

Ød	ØD	A	b	1+2+1		1+3+1		1+4+1		N
				H ¹	H ²	H ¹	H ²	H ¹	H ²	
235	265	15	7,5	90	100	115	125	140	150	25
235	275	20	10	110	120	140	150	170	180	30
240	270	15	7,5	90	100	115	125	140	150	25
240	280	20	10	110	120	140	150	170	180	30
245	275	15	7,5	90	100	115	125	140	150	25
245	285	20	10	110	120	140	150	170	180	30
250	280	15	7,5	90	100	115	125	140	150	25
250	290	20	10	110	120	140	150	170	180	30
255	285	15	7,5	90	100	115	125	140	150	25
255	295	20	10	110	120	140	150	170	180	30
260	290	15	7,5	90	100	115	125	140	150	25
260	300	20	10	110	120	140	150	170	180	30
265	295	15	7,5	90	100	115	125	140	150	25
265	305	20	10	110	120	140	150	170	180	30
270	300	15	7,5	90	100	115	125	140	150	25
270	310	20	10	110	120	140	150	170	180	30
275	305	15	7,5	90	100	115	125	140	150	25
275	315	20	10	110	120	140	150	170	180	30
280	310	15	7,5	90	100	115	125	140	150	25
280	320	20	10	110	120	140	150	170	180	30
285	315	15	7,5	90	100	115	125	140	150	25
285	325	20	10	110	120	140	150	170	180	30
290	320	15	7,5	90	100	115	125	140	150	25
290	330	20	10	110	120	140	150	170	180	30
295	325	15	7,5	90	100	115	125	140	150	25
295	335	20	10	110	120	140	150	170	180	30
300	330	15	7,5	90	100	115	125	140	150	25
300	340	20	10	110	120	140	150	170	180	30
305	335	15	7,5	90	100	115	125	140	150	25
305	345	20	10	110	120	140	150	170	180	30
310	340	15	7,5	90	100	115	125	140	150	25
310	350	20	10	110	120	140	150	170	180	30
315	345	15	7,5	90	100	115	125	140	150	25
315	355	20	10	110	120	140	150	170	180	30
320	350	15	7,5	90	100	115	125	140	150	25
320	360	20	10	110	120	140	150	170	180	30
325	355	15	7,5	90	100	115	125	140	150	25
325	365	20	10	110	120	140	150	170	180	30
330	360	15	7,5	90	100	115	125	140	150	25
330	370	20	10	110	120	140	150	170	180	30
335	365	15	7,5	90	100	115	125	140	150	25
335	375	20	10	110	120	140	150	170	180	30
340	370	15	7,5	90	100	115	125	140	150	25
340	380	20	10	110	120	140	150	170	180	30
345	375	15	7,5	90	100	115	125	140	150	25
345	385	20	10	110	120	140	150	170	180	30
350	380	15	7,5	90	100	115	125	140	150	25
350	390	20	10	110	120	140	150	170	180	30
355	385	15	7,5	90	100	115	125	140	150	25

CARCOTEX/SP - DIMENSIONAL TABLE

The dimensional table is referred to the standard metric sizes in split version.

H¹ or H²: alternative standard housing lengths. By machining the male adapter other housing lengths are achievable. As alternative an additional back-up ring can be used to get a different housing length.

Other dimensions, imperial sizes or endless seals are available. Pls. contact our sales office for the endless version or for a non-listed size.

Ød	ØD	A	b	1+2+1		1+3+1		1+4+1		N
				H ¹	H ²	H ¹	H ²	H ¹	H ²	
355	395	20	10	110	120	140	150	170	180	30
360	390	15	7,5	90	100	115	125	140	150	25
360	400	20	10	110	120	140	150	170	180	30
365	395	15	7,5	90	100	115	125	140	150	25
365	405	20	10	110	120	140	150	170	180	30
370	400	15	7,5	90	100	115	125	140	150	25
370	410	20	10	110	120	140	150	170	180	30
375	415	20	10	110	120	140	150	170	180	30
380	420	20	10	110	120	140	150	170	180	30
385	425	20	10	110	120	140	150	170	180	30
390	430	20	10	110	120	140	150	170	180	30
395	435	20	10	110	120	140	150	170	180	30
400	440	20	10	110	120	140	150	170	180	30
400	450	25	12,5	145	160	185	200	225	240	40
405	445	20	10	110	120	140	150	170	180	30
405	455	25	12,5	145	160	185	200	225	240	40
410	450	20	10	110	120	140	150	170	180	30
410	460	25	12,5	145	160	185	200	225	240	40
415	455	20	10	110	120	140	150	170	180	30
415	465	25	12,5	145	160	185	200	225	240	40
420	460	20	10	110	120	140	150	170	180	30
420	470	25	12,5	145	160	185	200	225	240	40
425	465	20	10	110	120	140	150	170	180	30
425	475	25	12,5	145	160	185	200	225	240	40
430	470	20	10	110	120	140	150	170	180	30
430	480	25	12,5	145	160	185	200	225	240	40
435	475	20	10	110	120	140	150	170	180	30
435	485	25	12,5	145	160	185	200	225	240	40
440	480	20	10	110	120	140	150	170	180	30
440	490	25	12,5	145	160	185	200	225	240	40
445	485	20	10	110	120	140	150	170	180	30
445	495	25	12,5	145	160	185	200	225	240	40
450	490	20	10	110	120	140	150	170	180	30
450	500	25	12,5	145	160	185	200	225	240	40
455	495	20	10	110	120	140	150	170	180	30
455	505	25	12,5	145	160	185	200	225	240	40
460	500	20	10	110	120	140	150	170	180	30
460	510	25	12,5	145	160	185	200	225	240	40
465	505	20	10	110	120	140	150	170	180	30
465	515	25	12,5	145	160	185	200	225	240	40
470	510	20	10	110	120	140	150	170	180	30
470	520	25	12,5	145	160	185	200	225	240	40
475	515	20	10	110	120	140	150	170	180	30
475	525	25	12,5	145	160	185	200	225	240	40
480	520	20	10	110	120	140	150	170	180	30
480	530	25	12,5	145	160	185	200	225	240	40
485	525	20	10	110	120	140	150	170	180	30
485	535	25	12,5	145	160	185	200	225	240	40
490	530	20	10	110	120	140	150	170	180	30
490	540	25	12,5	145	160	185	200	225	240	40

CARCOTEX/SP - DIMENSIONAL TABLE

The dimensional table is referred to the standard metric sizes in split version.

H¹ or H²: alternative standard housing lengths. By machining the male adapter other housing lengths are achievable. As alternative an additional back-up ring can be used to get a different housing length.

Other dimensions, imperial sizes or endless seals are available. Pls. contact our sales office for the endless version or for a non-listed size.

Ød	ØD	A	b	1+2+1		1+3+1		1+4+1		N
				H ¹	H ²	H ¹	H ²	H ¹	H ²	
495	535	20	10	110	120	140	150	170	180	30
495	545	25	12,5	145	160	185	200	225	240	40
500	540	20	10	110	120	140	150	170	180	30
500	550	25	12,5	145	160	185	200	225	240	40
505	545	20	10	110	120	140	150	170	180	30
505	555	25	12,5	145	160	185	200	225	240	40
510	550	20	10	110	120	140	150	170	180	30
510	560	25	12,5	145	160	185	200	225	240	40
515	555	20	10	110	120	140	150	170	180	30
515	565	25	12,5	145	160	185	200	225	240	40
520	560	20	10	110	120	140	150	170	180	30
520	570	25	12,5	145	160	185	200	225	240	40
525	565	20	10	110	120	140	150	170	180	30
525	575	25	12,5	145	160	185	200	225	240	40
530	570	20	10	110	120	140	150	170	180	30
530	580	25	12,5	145	160	185	200	225	240	40
535	575	20	10	110	120	140	150	170	180	30
535	585	25	12,5	145	160	185	200	225	240	40
540	580	20	10	110	120	140	150	170	180	30
540	590	25	12,5	145	160	185	200	225	240	40
545	585	20	10	110	120	140	150	170	180	30
545	595	25	12,5	145	160	185	200	225	240	40
550	590	20	10	110	120	140	150	170	180	30
550	600	25	12,5	145	160	185	200	225	240	40
555	595	20	10	110	120	140	150	170	180	30
555	605	25	12,5	145	160	185	200	225	240	40
560	600	20	10	110	120	140	150	170	180	30
560	610	25	12,5	145	160	185	200	225	240	40
565	605	20	10	110	120	140	150	170	180	30
565	615	25	12,5	145	160	185	200	225	240	40
570	610	20	10	110	120	140	150	170	180	30
570	620	25	12,5	145	160	185	200	225	240	40
575	615	20	10	110	120	140	150	170	180	30
575	625	25	12,5	145	160	185	200	225	240	40
580	620	20	10	110	120	140	150	170	180	30
580	630	25	12,5	145	160	185	200	225	240	40
585	625	20	10	110	120	140	150	170	180	30
585	635	25	12,5	145	160	185	200	225	240	40
590	630	20	10	110	120	140	150	170	180	30
590	640	25	12,5	145	160	185	200	225	240	40
595	635	20	10	110	120	140	150	170	180	30
595	645	25	12,5	145	160	185	200	225	240	40
600	640	20	10	110	120	140	150	170	180	30
600	650	25	12,5	145	160	185	200	225	240	40
605	645	20	10	110	120	140	150	170	180	30
605	655	25	12,5	145	160	185	200	225	240	40
610	650	20	10	110	120	140	150	170	180	30
610	660	25	12,5	145	160	185	200	225	240	40
615	655	20	10	110	120	140	150	170	180	30
615	665	25	12,5	145	160	185	200	225	240	40

CARCOTEX/SP - DIMENSIONAL TABLE

The dimensional table is referred to the standard metric sizes in split version.

H¹ or H²: alternative standard housing lengths. By machining the male adapter other housing lengths are achievable. As alternative an additional back-up ring can be used to get a different housing length.

Other dimensions, imperial sizes or endless seals are available. Pls. contact our sales office for the endless version or for a non-listed size.

Ød	ØD	A	b	1+2+1		1+3+1		1+4+1		N
				H ¹	H ²	H ¹	H ²	H ¹	H ²	
620	660	20	10	110	120	140	150	170	180	30
620	670	25	12,5	145	160	185	200	225	240	40
625	665	20	10	110	120	140	150	170	180	30
625	675	25	12,5	145	160	185	200	225	240	40
630	670	20	10	110	120	140	150	170	180	30
630	680	25	12,5	145	160	185	200	225	240	40
635	675	20	10	110	120	140	150	170	180	30
635	685	25	12,5	145	160	185	200	225	240	40
640	680	20	10	110	120	140	150	170	180	30
640	690	25	12,5	145	160	185	200	225	240	40
645	685	20	10	110	120	140	150	170	180	30
645	695	25	12,5	145	160	185	200	225	240	40
650	690	20	10	110	120	140	150	170	180	30
650	700	25	12,5	145	160	185	200	225	240	40
655	695	20	10	110	120	140	150	170	180	30
655	705	25	12,5	145	160	185	200	225	240	40
660	700	20	10	110	120	140	150	170	180	30
660	710	25	12,5	145	160	185	200	225	240	40
665	705	20	10	110	120	140	150	170	180	30
665	715	25	12,5	145	160	185	200	225	240	40
670	710	20	10	110	120	140	150	170	180	30
670	720	25	12,5	145	160	185	200	225	240	40
675	715	20	10	110	120	140	150	170	180	30
675	725	25	12,5	145	160	185	200	225	240	40
680	720	20	10	110	120	140	150	170	180	30
680	730	25	12,5	145	160	185	200	225	240	40
685	725	20	10	110	120	140	150	170	180	30
685	735	25	12,5	145	160	185	200	225	240	40
690	730	20	10	110	120	140	150	170	180	30
690	740	25	12,5	145	160	185	200	225	240	40
695	735	20	10	110	120	140	150	170	180	30
695	745	25	12,5	145	160	185	200	225	240	40
700	740	20	10	110	120	140	150	170	180	30
700	750	25	12,5	145	160	185	200	225	240	40
700	760	30	15	150	165	195	210	240	255	45
705	745	20	10	110	120	140	150	170	180	30
705	755	25	12,5	145	160	185	200	225	240	40
705	765	30	15	150	165	195	210	240	255	45
710	750	20	10	110	120	140	150	170	180	30
710	760	25	12,5	145	160	185	200	225	240	40
710	770	30	15	150	165	195	210	240	255	45
715	755	20	10	110	120	140	150	170	180	30
715	765	25	12,5	145	160	185	200	225	240	40
715	775	30	15	150	165	195	210	240	255	45
720	760	20	10	110	120	140	150	170	180	30
720	770	25	12,5	145	160	185	200	225	240	40
720	780	30	15	150	165	195	210	240	255	45
725	765	20	10	110	120	140	150	170	180	30
725	775	25	12,5	145	160	185	200	225	240	40
725	785	30	15	150	165	195	210	240	255	45

CARCOTEX/SP - DIMENSIONAL TABLE

The dimensional table is referred to the standard metric sizes in split version.

H¹ or H²: alternative standard housing lengths. By machining the male adapter other housing lengths are achievable. As alternative an additional back-up ring can be used to get a different housing length.

Other dimensions, imperial sizes or endless seals are available. Pls. contact our sales office for the endless version or for a non-listed size.

Ød	ØD	A	b	1+2+1		1+3+1		1+4+1		N
				H ¹	H ²	H ¹	H ²	H ¹	H ²	
730	770	20	10	110	120	140	150	170	180	30
730	780	25	12,5	145	160	185	200	225	240	40
730	790	30	15	150	165	195	210	240	255	45
735	775	20	10	110	120	140	150	170	180	30
735	785	25	12,5	145	160	185	200	225	240	40
735	795	30	15	150	165	195	210	240	255	45
740	780	20	10	110	120	140	150	170	180	30
740	790	25	12,5	145	160	185	200	225	240	40
740	800	30	15	150	165	195	210	240	255	45
745	785	20	10	110	120	140	150	170	180	30
745	795	25	12,5	145	160	185	200	225	240	40
745	805	30	15	150	165	195	210	240	255	45
750	790	20	10	110	120	140	150	170	180	30
750	800	25	12,5	145	160	185	200	225	240	40
750	810	30	15	150	165	195	210	240	255	45
755	795	20	10	110	120	140	150	170	180	30
755	805	25	12,5	145	160	185	200	225	240	40
755	815	30	15	150	165	195	210	240	255	45
760	800	20	10	110	120	140	150	170	180	30
760	810	25	12,5	145	160	185	200	225	240	40
760	820	30	15	150	165	195	210	240	255	45
765	805	20	10	110	120	140	150	170	180	30
765	815	25	12,5	145	160	185	200	225	240	40
765	825	30	15	150	165	195	210	240	255	45
770	810	20	10	110	120	140	150	170	180	30
770	820	25	12,5	145	160	185	200	225	240	40
770	830	30	15	150	165	195	210	240	255	45
775	815	20	10	110	120	140	150	170	180	30
775	825	25	12,5	145	160	185	200	225	240	40
775	835	30	15	150	165	195	210	240	255	45
780	820	20	10	110	120	140	150	170	180	30
780	830	25	12,5	145	160	185	200	225	240	40
780	840	30	15	150	165	195	210	240	255	45
785	825	20	10	110	120	140	150	170	180	30
785	835	25	12,5	145	160	185	200	225	240	40
785	845	30	15	150	165	195	210	240	255	45
790	830	20	10	110	120	140	150	170	180	30
790	840	25	12,5	145	160	185	200	225	240	40
790	850	30	15	150	165	195	210	240	255	45
795	835	20	10	110	120	140	150	170	180	30
795	845	25	12,5	145	160	185	200	225	240	40
795	855	30	15	150	165	195	210	240	255	45
800	840	20	10	110	120	140	150	170	180	30
800	850	25	12,5	145	160	185	200	225	240	40
800	860	30	15	150	165	195	210	240	255	45
805	845	20	10	110	120	140	150	170	180	30
805	855	25	12,5	145	160	185	200	225	240	40
805	865	30	15	150	165	195	210	240	255	45
810	850	20	10	110	120	140	150	170	180	30
810	860	25	12,5	145	160	185	200	225	240	40

CARCOTEX/SP - DIMENSIONAL TABLE

The dimensional table is referred to the standard metric sizes in split version.

H¹ or H²: alternative standard housing lengths. By machining the male adapter other housing lengths are achievable. As alternative an additional back-up ring can be used to get a different housing length.

Other dimensions, imperial sizes or endless seals are available. Pls. contact our sales office for the endless version or for a non-listed size.

Ød	ØD	A	b	1+2+1		1+3+1		1+4+1		N
				H ¹	H ²	H ¹	H ²	H ¹	H ²	
810	870	30	15	150	165	195	210	240	255	45
815	855	20	10	110	120	140	150	170	180	30
815	865	25	12,5	145	160	185	200	225	240	40
815	875	30	15	150	165	195	210	240	255	45
820	860	20	10	110	120	140	150	170	180	30
820	870	25	12,5	145	160	185	200	225	240	40
820	880	30	15	150	165	195	210	240	255	45
825	865	20	10	110	120	140	150	170	180	30
825	875	25	12,5	145	160	185	200	225	240	40
825	885	30	15	150	165	195	210	240	255	45
830	870	20	10	110	120	140	150	170	180	30
830	880	25	12,5	145	160	185	200	225	240	40
830	890	30	15	150	165	195	210	240	255	45
835	875	20	10	110	120	140	150	170	180	30
835	885	25	12,5	145	160	185	200	225	240	40
835	895	30	15	150	165	195	210	240	255	45
840	880	20	10	110	120	140	150	170	180	30
840	890	25	12,5	145	160	185	200	225	240	40
840	900	30	15	150	165	195	210	240	255	45
845	885	20	10	110	120	140	150	170	180	30
845	895	25	12,5	145	160	185	200	225	240	40
845	905	30	15	150	165	195	210	240	255	45
850	890	20	10	110	120	140	150	170	180	30
850	900	25	12,5	145	160	185	200	225	240	40
850	910	30	15	150	165	195	210	240	255	45
855	895	20	10	110	120	140	150	170	180	30
855	905	25	12,5	145	160	185	200	225	240	40
855	915	30	15	150	165	195	210	240	255	45
860	900	20	10	110	120	140	150	170	180	30
860	910	25	12,5	145	160	185	200	225	240	40
860	920	30	15	150	165	195	210	240	255	45
865	905	20	10	110	120	140	150	170	180	30
865	915	25	12,5	145	160	185	200	225	240	40
865	925	30	15	150	165	195	210	240	255	45
870	910	20	10	110	120	140	150	170	180	30
870	920	25	12,5	145	160	185	200	225	240	40
870	930	30	15	150	165	195	210	240	255	45
875	915	20	10	110	120	140	150	170	180	30
875	925	25	12,5	145	160	185	200	225	240	40
875	935	30	15	150	165	195	210	240	255	45
880	920	20	10	110	120	140	150	170	180	30
880	930	25	12,5	145	160	185	200	225	240	40
880	940	30	15	150	165	195	210	240	255	45
885	925	20	10	110	120	140	150	170	180	30
885	935	25	12,5	145	160	185	200	225	240	40
885	945	30	15	150	165	195	210	240	255	45
890	930	20	10	110	120	140	150	170	180	30
890	940	25	12,5	145	160	185	200	225	240	40
890	950	30	15	150	165	195	210	240	255	45
895	935	20	10	110	120	140	150	170	180	30

CARCOTEX/SP - DIMENSIONAL TABLE

The dimensional table is referred to the standard metric sizes in split version.

H¹ or H²: alternative standard housing lengths. By machining the male adapter other housing lengths are achievable. As alternative an additional back-up ring can be used to get a different housing length.

Other dimensions, imperial sizes or endless seals are available. Pls. contact our sales office for the endless version or for a non-listed size.

Ød	ØD	A	b	1+2+1		1+3+1		1+4+1		N
				H ¹	H ²	H ¹	H ²	H ¹	H ²	
895	945	25	12,5	145	160	185	200	225	240	40
895	955	30	15	150	165	195	210	240	255	45
900	940	20	10	110	120	140	150	170	180	30
900	950	25	12,5	145	160	185	200	225	240	40
900	960	30	15	150	165	195	210	240	255	45
905	945	20	10	110	120	140	150	170	180	30
905	955	25	12,5	145	160	185	200	225	240	40
905	965	30	15	150	165	195	210	240	255	45
910	950	20	10	110	120	140	150	170	180	30
910	960	25	12,5	145	160	185	200	225	240	40
910	970	30	15	150	165	195	210	240	255	45
915	955	20	10	110	120	140	150	170	180	30
915	965	25	12,5	145	160	185	200	225	240	40
915	975	30	15	150	165	195	210	240	255	45
920	960	20	10	110	120	140	150	170	180	30
920	970	25	12,5	145	160	185	200	225	240	40
920	980	30	15	150	165	195	210	240	255	45
925	965	20	10	110	120	140	150	170	180	30
925	975	25	12,5	145	160	185	200	225	240	40
925	985	30	15	150	165	195	210	240	255	45
930	970	20	10	110	120	140	150	170	180	30
930	980	25	12,5	145	160	185	200	225	240	40
930	990	30	15	150	165	195	210	240	255	45
935	975	20	10	110	120	140	150	170	180	30
935	985	25	12,5	145	160	185	200	225	240	40
935	995	30	15	150	165	195	210	240	255	45
940	980	20	10	110	120	140	150	170	180	30
940	990	25	12,5	145	160	185	200	225	240	40
940	1000	30	15	150	165	195	210	240	255	45
945	985	20	10	110	120	140	150	170	180	30
945	995	25	12,5	145	160	185	200	225	240	40
945	1005	30	15	150	165	195	210	240	255	45
950	990	20	10	110	120	140	150	170	180	30
950	1000	25	12,5	145	160	185	200	225	240	40
950	1010	30	15	150	165	195	210	240	255	45
955	995	20	10	110	120	140	150	170	180	30
955	1005	25	12,5	145	160	185	200	225	240	40
955	1015	30	15	150	165	195	210	240	255	45
960	1000	20	10	110	120	140	150	170	180	30
960	1010	25	12,5	145	160	185	200	225	240	40
960	1020	30	15	150	165	195	210	240	255	45
965	1005	20	10	110	120	140	150	170	180	30
965	1015	25	12,5	145	160	185	200	225	240	40
965	1025	30	15	150	165	195	210	240	255	45
970	1010	20	10	110	120	140	150	170	180	30
970	1020	25	12,5	145	160	185	200	225	240	40
970	1030	30	15	150	165	195	210	240	255	45
975	1015	20	10	110	120	140	150	170	180	30
975	1025	25	12,5	145	160	185	200	225	240	40
975	1035	30	15	150	165	195	210	240	255	45

CARCOTEX/SP - DIMENSIONAL TABLE

The dimensional table is referred to the standard metric sizes in split version.

H¹ or H²: alternative standard housing lengths. By machining the male adapter other housing lengths are achievable. As alternative an additional back-up ring can be used to get a different housing length.

Other dimensions, imperial sizes or endless seals are available. Pls. contact our sales office for the endless version or for a non-listed size.

Ød	ØD	A	b	1+2+1		1+3+1		1+4+1		N
				H ¹	H ²	H ¹	H ²	H ¹	H ²	
980	1020	20	10	110	120	140	150	170	180	30
980	1030	25	12,5	145	160	185	200	225	240	40
980	1040	30	15	150	165	195	210	240	255	45
985	1025	20	10	110	120	140	150	170	180	30
985	1035	25	12,5	145	160	185	200	225	240	40
985	1045	30	15	150	165	195	210	240	255	45
990	1030	20	10	110	120	140	150	170	180	30
990	1040	25	12,5	145	160	185	200	225	240	40
990	1050	30	15	150	165	195	210	240	255	45
995	1035	20	10	110	120	140	150	170	180	30
995	1045	25	12,5	145	160	185	200	225	240	40
995	1055	30	15	150	165	195	210	240	255	45
1000	1040	20	10	110	120	140	150	170	180	30
1000	1050	25	12,5	145	160	185	200	225	240	40
1000	1060	30	15	150	165	195	210	240	255	45
1005	1045	20	10	110	120	140	150	170	180	30
1005	1055	25	12,5	145	160	185	200	225	240	40
1005	1065	30	15	150	165	195	210	240	255	45
1010	1050	20	10	110	120	140	150	170	180	30
1010	1060	25	12,5	145	160	185	200	225	240	40
1010	1070	30	15	150	165	195	210	240	255	45
1015	1055	20	10	110	120	140	150	170	180	30
1015	1065	25	12,5	145	160	185	200	225	240	40
1015	1075	30	15	150	165	195	210	240	255	45
1020	1060	20	10	110	120	140	150	170	180	30
1020	1070	25	12,5	145	160	185	200	225	240	40
1020	1080	30	15	150	165	195	210	240	255	45
1025	1065	20	10	110	120	140	150	170	180	30
1025	1075	25	12,5	145	160	185	200	225	240	40
1025	1085	30	15	150	165	195	210	240	255	45
1030	1070	20	10	110	120	140	150	170	180	30
1030	1080	25	12,5	145	160	185	200	225	240	40
1030	1090	30	15	150	165	195	210	240	255	45
1035	1075	20	10	110	120	140	150	170	180	30
1035	1085	25	12,5	145	160	185	200	225	240	40
1035	1095	30	15	150	165	195	210	240	255	45
1040	1080	20	10	110	120	140	150	170	180	30
1040	1090	25	12,5	145	160	185	200	225	240	40
1040	1100	30	15	150	165	195	210	240	255	45
1045	1085	20	10	110	120	140	150	170	180	30
1045	1095	25	12,5	145	160	185	200	225	240	40
1045	1105	30	15	150	165	195	210	240	255	45
1050	1090	20	10	110	120	140	150	170	180	30
1050	1100	25	12,5	145	160	185	200	225	240	40
1050	1110	30	15	150	165	195	210	240	255	45
1055	1095	20	10	110	120	140	150	170	180	30
1055	1105	25	12,5	145	160	185	200	225	240	40
1055	1115	30	15	150	165	195	210	240	255	45
1060	1100	20	10	110	120	140	150	170	180	30
1060	1110	25	12,5	145	160	185	200	225	240	40

CARCOTEX/SP - DIMENSIONAL TABLE

The dimensional table is referred to the standard metric sizes in split version.

H¹ or H²: alternative standard housing lengths. By machining the male adapter other housing lengths are achievable. As alternative an additional back-up ring can be used to get a different housing length.

Other dimensions, imperial sizes or endless seals are available. Pls. contact our sales office for the endless version or for a non-listed size.

Ød	ØD	A	b	1+2+1		1+3+1		1+4+1		N
				H ¹	H ²	H ¹	H ²	H ¹	H ²	
1060	1120	30	15	150	165	195	210	240	255	45
1065	1105	20	10	110	120	140	150	170	180	30
1065	1115	25	12,5	145	160	185	200	225	240	40
1065	1125	30	15	150	165	195	210	240	255	45
1070	1110	20	10	110	120	140	150	170	180	30
1070	1120	25	12,5	145	160	185	200	225	240	40
1070	1130	30	15	150	165	195	210	240	255	45
1075	1115	20	10	110	120	140	150	170	180	30
1075	1125	25	12,5	145	160	185	200	225	240	40
1075	1135	30	15	150	165	195	210	240	255	45
1080	1120	20	10	110	120	140	150	170	180	30
1080	1130	25	12,5	145	160	185	200	225	240	40
1080	1140	30	15	150	165	195	210	240	255	45
1085	1125	20	10	110	120	140	150	170	180	30
1085	1135	25	12,5	145	160	185	200	225	240	40
1085	1145	30	15	150	165	195	210	240	255	45
1090	1130	20	10	110	120	140	150	170	180	30
1090	1140	25	12,5	145	160	185	200	225	240	40
1090	1150	30	15	150	165	195	210	240	255	45
1095	1135	20	10	110	120	140	150	170	180	30
1095	1145	25	12,5	145	160	185	200	225	240	40
1095	1155	30	15	150	165	195	210	240	255	45
1100	1140	20	10	110	120	140	150	170	180	30
1100	1150	25	12,5	145	160	185	200	225	240	40
1100	1160	30	15	150	165	195	210	240	255	45
1105	1145	20	10	110	120	140	150	170	180	30
1105	1155	25	12,5	145	160	185	200	225	240	40
1105	1165	30	15	150	165	195	210	240	255	45
1110	1150	20	10	110	120	140	150	170	180	30
1110	1160	25	12,5	145	160	185	200	225	240	40
1110	1170	30	15	150	165	195	210	240	255	45
1115	1155	20	10	110	120	140	150	170	180	30
1115	1165	25	12,5	145	160	185	200	225	240	40
1115	1175	30	15	150	165	195	210	240	255	45
1120	1160	20	10	110	120	140	150	170	180	30
1120	1170	25	12,5	145	160	185	200	225	240	40
1120	1180	30	15	150	165	195	210	240	255	45
1125	1165	20	10	110	120	140	150	170	180	30
1125	1175	25	12,5	145	160	185	200	225	240	40
1125	1185	30	15	150	165	195	210	240	255	45
1130	1170	20	10	110	120	140	150	170	180	30
1130	1180	25	12,5	145	160	185	200	225	240	40
1130	1190	30	15	150	165	195	210	240	255	45
1135	1175	20	10	110	120	140	150	170	180	30
1135	1185	25	12,5	145	160	185	200	225	240	40
1135	1195	30	15	150	165	195	210	240	255	45
1140	1180	20	10	110	120	140	150	170	180	30
1140	1190	25	12,5	145	160	185	200	225	240	40
1140	1200	30	15	150	165	195	210	240	255	45
1145	1185	20	10	110	120	140	150	170	180	30

CARCOTEX/SP - DIMENSIONAL TABLE

The dimensional table is referred to the standard metric sizes in split version.

H¹ or H²: alternative standard housing lengths. By machining the male adapter other housing lengths are achievable. As alternative an additional back-up ring can be used to get a different housing length.

Other dimensions, imperial sizes or endless seals are available. Pls. contact our sales office for the endless version or for a non-listed size.

Ød	ØD	A	b	1+2+1		1+3+1		1+4+1		N
				H ¹	H ²	H ¹	H ²	H ¹	H ²	
1145	1195	25	12,5	145	160	185	200	225	240	40
1145	1205	30	15	150	165	195	210	240	255	45
1150	1190	20	10	110	120	140	150	170	180	30
1150	1200	25	12,5	145	160	185	200	225	240	40
1150	1210	30	15	150	165	195	210	240	255	45
1155	1195	20	10	110	120	140	150	170	180	30
1155	1205	25	12,5	145	160	185	200	225	240	40
1155	1215	30	15	150	165	195	210	240	255	45
1160	1200	20	10	110	120	140	150	170	180	30
1160	1210	25	12,5	145	160	185	200	225	240	40
1160	1220	30	15	150	165	195	210	240	255	45
1165	1205	20	10	110	120	140	150	170	180	30
1165	1215	25	12,5	145	160	185	200	225	240	40
1165	1225	30	15	150	165	195	210	240	255	45
1170	1210	20	10	110	120	140	150	170	180	30
1170	1220	25	12,5	145	160	185	200	225	240	40
1170	1230	30	15	150	165	195	210	240	255	45
1175	1215	20	10	110	120	140	150	170	180	30
1175	1225	25	12,5	145	160	185	200	225	240	40
1175	1235	30	15	150	165	195	210	240	255	45
1180	1220	20	10	110	120	140	150	170	180	30
1180	1230	25	12,5	145	160	185	200	225	240	40
1180	1240	30	15	150	165	195	210	240	255	45
1185	1225	20	10	110	120	140	150	170	180	30
1185	1235	25	12,5	145	160	185	200	225	240	40
1185	1245	30	15	150	165	195	210	240	255	45
1190	1230	20	10	110	120	140	150	170	180	30
1190	1240	25	12,5	145	160	185	200	225	240	40
1190	1250	30	15	150	165	195	210	240	255	45
1195	1235	20	10	110	120	140	150	170	180	30
1195	1245	25	12,5	145	160	185	200	225	240	40
1195	1255	30	15	150	165	195	210	240	255	45
1200	1240	20	10	110	120	140	150	170	180	30
1200	1250	25	12,5	145	160	185	200	225	240	40
1200	1260	30	15	150	165	195	210	240	255	45
1205	1245	20	10	110	120	140	150	170	180	30
1205	1255	25	12,5	145	160	185	200	225	240	40
1205	1265	30	15	150	165	195	210	240	255	45
1210	1250	20	10	110	120	140	150	170	180	30
1210	1260	25	12,5	145	160	185	200	225	240	40
1210	1270	30	15	150	165	195	210	240	255	45
1215	1255	20	10	110	120	140	150	170	180	30
1215	1265	25	12,5	145	160	185	200	225	240	40
1215	1275	30	15	150	165	195	210	240	255	45
1220	1260	20	10	110	120	140	150	170	180	30
1220	1270	25	12,5	145	160	185	200	225	240	40
1220	1280	30	15	150	165	195	210	240	255	45
1225	1265	20	10	110	120	140	150	170	180	30
1225	1275	25	12,5	145	160	185	200	225	240	40
1225	1285	30	15	150	165	195	210	240	255	45

CARCOTEX/SP - DIMENSIONAL TABLE

The dimensional table is referred to the standard metric sizes in split version.

H¹ or H²: alternative standard housing lengths. By machining the male adapter other housing lengths are achievable. As alternative an additional back-up ring can be used to get a different housing length.

Other dimensions, imperial sizes or endless seals are available. Pls. contact our sales office for the endless version or for a non-listed size.

Ød	ØD	A	b	1+2+1		1+3+1		1+4+1		N
				H ¹	H ²	H ¹	H ²	H ¹	H ²	
1230	1270	20	10	110	120	140	150	170	180	30
1230	1280	25	12,5	145	160	185	200	225	240	40
1230	1290	30	15	150	165	195	210	240	255	45
1235	1275	20	10	110	120	140	150	170	180	30
1235	1285	25	12,5	145	160	185	200	225	240	40
1235	1295	30	15	150	165	195	210	240	255	45
1240	1280	20	10	110	120	140	150	170	180	30
1240	1290	25	12,5	145	160	185	200	225	240	40
1240	1300	30	15	150	165	195	210	240	255	45
1245	1295	25	12,5	145	160	185	200	225	240	40
1245	1305	30	15	150	165	195	210	240	255	45
1250	1300	25	12,5	145	160	185	200	225	240	40
1250	1310	30	15	150	165	195	210	240	255	45
1255	1305	25	12,5	145	160	185	200	225	240	40
1255	1315	30	15	150	165	195	210	240	255	45
1260	1310	25	12,5	145	160	185	200	225	240	40
1260	1320	30	15	150	165	195	210	240	255	45
1265	1315	25	12,5	145	160	185	200	225	240	40
1265	1325	30	15	150	165	195	210	240	255	45
1270	1320	25	12,5	145	160	185	200	225	240	40
1270	1330	30	15	150	165	195	210	240	255	45
1275	1325	25	12,5	145	160	185	200	225	240	40
1275	1335	30	15	150	165	195	210	240	255	45
1280	1330	25	12,5	145	160	185	200	225	240	40
1280	1340	30	15	150	165	195	210	240	255	45
1285	1335	25	12,5	145	160	185	200	225	240	40
1285	1345	30	15	150	165	195	210	240	255	45
1290	1340	25	12,5	145	160	185	200	225	240	40
1290	1350	30	15	150	165	195	210	240	255	45
1295	1345	25	12,5	145	160	185	200	225	240	40
1295	1355	30	15	150	165	195	210	240	255	45
1300	1350	25	12,5	145	160	185	200	225	240	40
1300	1360	30	15	150	165	195	210	240	255	45
1305	1355	25	12,5	145	160	185	200	225	240	40
1305	1365	30	15	150	165	195	210	240	255	45
1310	1360	25	12,5	145	160	185	200	225	240	40
1310	1370	30	15	150	165	195	210	240	255	45
1315	1365	25	12,5	145	160	185	200	225	240	40
1315	1375	30	15	150	165	195	210	240	255	45
1320	1370	25	12,5	145	160	185	200	225	240	40
1320	1380	30	15	150	165	195	210	240	255	45
1325	1375	25	12,5	145	160	185	200	225	240	40
1325	1385	30	15	150	165	195	210	240	255	45
1330	1380	25	12,5	145	160	185	200	225	240	40
1330	1390	30	15	150	165	195	210	240	255	45
1335	1385	25	12,5	145	160	185	200	225	240	40
1335	1395	30	15	150	165	195	210	240	255	45
1340	1390	25	12,5	145	160	185	200	225	240	40
1340	1400	30	15	150	165	195	210	240	255	45
1345	1395	25	12,5	145	160	185	200	225	240	40

CARCOTEX/SP - DIMENSIONAL TABLE

The dimensional table is referred to the standard metric sizes in split version.

H¹ or H²: alternative standard housing lengths. By machining the male adapter other housing lengths are achievable. As alternative an additional back-up ring can be used to get a different housing length.

Other dimensions, imperial sizes or endless seals are available. Pls. contact our sales office for the endless version or for a non-listed size.

Ød	ØD	A	b	1+2+1		1+3+1		1+4+1		N
				H ¹	H ²	H ¹	H ²	H ¹	H ²	
1345	1405	30	15	150	165	195	210	240	255	45
1350	1400	25	12,5	145	160	185	200	225	240	40
1350	1410	30	15	150	165	195	210	240	255	45
1355	1405	25	12,5	145	160	185	200	225	240	40
1355	1415	30	15	150	165	195	210	240	255	45
1360	1410	25	12,5	145	160	185	200	225	240	40
1360	1420	30	15	150	165	195	210	240	255	45
1365	1415	25	12,5	145	160	185	200	225	240	40
1365	1425	30	15	150	165	195	210	240	255	45
1370	1420	25	12,5	145	160	185	200	225	240	40
1370	1430	30	15	150	165	195	210	240	255	45
1375	1425	25	12,5	145	160	185	200	225	240	40
1375	1435	30	15	150	165	195	210	240	255	45
1380	1430	25	12,5	145	160	185	200	225	240	40
1380	1440	30	15	150	165	195	210	240	255	45
1385	1435	25	12,5	145	160	185	200	225	240	40
1385	1445	30	15	150	165	195	210	240	255	45
1390	1440	25	12,5	145	160	185	200	225	240	40
1390	1450	30	15	150	165	195	210	240	255	45
1395	1445	25	12,5	145	160	185	200	225	240	40
1395	1455	30	15	150	165	195	210	240	255	45
1400	1450	25	12,5	145	160	185	200	225	240	40
1400	1460	30	15	150	165	195	210	240	255	45
1405	1455	25	12,5	145	160	185	200	225	240	40
1405	1465	30	15	150	165	195	210	240	255	45
1410	1460	25	12,5	145	160	185	200	225	240	40
1410	1470	30	15	150	165	195	210	240	255	45
1415	1465	25	12,5	145	160	185	200	225	240	40
1415	1475	30	15	150	165	195	210	240	255	45
1420	1470	25	12,5	145	160	185	200	225	240	40
1420	1480	30	15	150	165	195	210	240	255	45
1425	1475	25	12,5	145	160	185	200	225	240	40
1425	1485	30	15	150	165	195	210	240	255	45
1430	1480	25	12,5	145	160	185	200	225	240	40
1430	1490	30	15	150	165	195	210	240	255	45
1435	1485	25	12,5	145	160	185	200	225	240	40
1435	1495	30	15	150	165	195	210	240	255	45
1440	1490	25	12,5	145	160	185	200	225	240	40
1440	1500	30	15	150	165	195	210	240	255	45
1445	1495	25	12,5	145	160	185	200	225	240	40
1445	1505	30	15	150	165	195	210	240	255	45
1450	1500	25	12,5	145	160	185	200	225	240	40
1450	1510	30	15	150	165	195	210	240	255	45
1455	1505	25	12,5	145	160	185	200	225	240	40
1455	1515	30	15	150	165	195	210	240	255	45
1460	1510	25	12,5	145	160	185	200	225	240	40
1460	1520	30	15	150	165	195	210	240	255	45
1465	1515	25	12,5	145	160	185	200	225	240	40
1465	1525	30	15	150	165	195	210	240	255	45
1470	1520	25	12,5	145	160	185	200	225	240	40

CARCOTEX/SP - DIMENSIONAL TABLE

The dimensional table is referred to the standard metric sizes in split version.

H¹ or H²: alternative standard housing lengths. By machining the male adapter other housing lengths are achievable. As alternative an additional back-up ring can be used to get a different housing length.

Other dimensions, imperial sizes or endless seals are available. Pls. contact our sales office for the endless version or for a non-listed size.

Ød	ØD	A	b	1+2+1		1+3+1		1+4+1		N
				H ¹	H ²	H ¹	H ²	H ¹	H ²	
1470	1530	30	15	150	165	195	210	240	255	45
1475	1525	25	12,5	145	160	185	200	225	240	40
1475	1535	30	15	150	165	195	210	240	255	45
1480	1530	25	12,5	145	160	185	200	225	240	40
1480	1540	30	15	150	165	195	210	240	255	45
1485	1535	25	12,5	145	160	185	200	225	240	40
1485	1545	30	15	150	165	195	210	240	255	45
1490	1540	25	12,5	145	160	185	200	225	240	40
1490	1550	30	15	150	165	195	210	240	255	45
1495	1545	25	12,5	145	160	185	200	225	240	40
1495	1555	30	15	150	165	195	210	240	255	45
1500	1550	25	12,5	145	160	185	200	225	240	40
1500	1560	30	15	150	165	195	210	240	255	45
1505	1555	25	12,5	145	160	185	200	225	240	40
1505	1565	30	15	150	165	195	210	240	255	45
1510	1560	25	12,5	145	160	185	200	225	240	40
1510	1570	30	15	150	165	195	210	240	255	45
1515	1565	25	12,5	145	160	185	200	225	240	40
1515	1575	30	15	150	165	195	210	240	255	45
1520	1570	25	12,5	145	160	185	200	225	240	40
1520	1580	30	15	150	165	195	210	240	255	45
1525	1575	25	12,5	145	160	185	200	225	240	40
1525	1585	30	15	150	165	195	210	240	255	45
1530	1580	25	12,5	145	160	185	200	225	240	40
1530	1590	30	15	150	165	195	210	240	255	45
1535	1585	25	12,5	145	160	185	200	225	240	40
1535	1595	30	15	150	165	195	210	240	255	45
1540	1590	25	12,5	145	160	185	200	225	240	40
1540	1600	30	15	150	165	195	210	240	255	45
1545	1595	25	12,5	145	160	185	200	225	240	40
1545	1605	30	15	150	165	195	210	240	255	45
1550	1600	25	12,5	145	160	185	200	225	240	40
1550	1610	30	15	150	165	195	210	240	255	45
1555	1605	25	12,5	145	160	185	200	225	240	40
1555	1615	30	15	150	165	195	210	240	255	45
1560	1610	25	12,5	145	160	185	200	225	240	40
1560	1620	30	15	150	165	195	210	240	255	45
1565	1615	25	12,5	145	160	185	200	225	240	40
1565	1625	30	15	150	165	195	210	240	255	45
1570	1620	25	12,5	145	160	185	200	225	240	40
1570	1630	30	15	150	165	195	210	240	255	45
1575	1625	25	12,5	145	160	185	200	225	240	40
1575	1635	30	15	150	165	195	210	240	255	45
1580	1630	25	12,5	145	160	185	200	225	240	40
1580	1640	30	15	150	165	195	210	240	255	45
1585	1635	25	12,5	145	160	185	200	225	240	40
1585	1645	30	15	150	165	195	210	240	255	45
1590	1640	25	12,5	145	160	185	200	225	240	40
1590	1650	30	15	150	165	195	210	240	255	45
1595	1645	25	12,5	145	160	185	200	225	240	40

CARCOTEX/SP - DIMENSIONAL TABLE

The dimensional table is referred to the standard metric sizes in split version.

H¹ or H²: alternative standard housing lengths. By machining the male adapter other housing lengths are achievable. As alternative an additional back-up ring can be used to get a different housing length.

Other dimensions, imperial sizes or endless seals are available. Pls. contact our sales office for the endless version or for a non-listed size.

Ød	ØD	A	b	1+2+1		1+3+1		1+4+1		N
				H ¹	H ²	H ¹	H ²	H ¹	H ²	
1595	1655	30	15	150	165	195	210	240	255	45
1600	1650	25	12,5	145	160	185	200	225	240	40
1600	1660	30	15	150	165	195	210	240	255	45
1605	1655	25	12,5	145	160	185	200	225	240	40
1605	1665	30	15	150	165	195	210	240	255	45
1610	1660	25	12,5	145	160	185	200	225	240	40
1610	1670	30	15	150	165	195	210	240	255	45
1615	1665	25	12,5	145	160	185	200	225	240	40
1615	1675	30	15	150	165	195	210	240	255	45
1620	1670	25	12,5	145	160	185	200	225	240	40
1620	1680	30	15	150	165	195	210	240	255	45
1625	1675	25	12,5	145	160	185	200	225	240	40
1625	1685	30	15	150	165	195	210	240	255	45
1630	1680	25	12,5	145	160	185	200	225	240	40
1630	1690	30	15	150	165	195	210	240	255	45
1635	1685	25	12,5	145	160	185	200	225	240	40
1635	1695	30	15	150	165	195	210	240	255	45
1640	1690	25	12,5	145	160	185	200	225	240	40
1640	1700	30	15	150	165	195	210	240	255	45
1645	1695	25	12,5	145	160	185	200	225	240	40
1645	1705	30	15	150	165	195	210	240	255	45
1650	1700	25	12,5	145	160	185	200	225	240	40
1650	1710	30	15	150	165	195	210	240	255	45
1655	1705	25	12,5	145	160	185	200	225	240	40
1655	1715	30	15	150	165	195	210	240	255	45
1660	1710	25	12,5	145	160	185	200	225	240	40
1660	1720	30	15	150	165	195	210	240	255	45
1665	1715	25	12,5	145	160	185	200	225	240	40
1665	1725	30	15	150	165	195	210	240	255	45
1670	1720	25	12,5	145	160	185	200	225	240	40
1670	1730	30	15	150	165	195	210	240	255	45
1675	1725	25	12,5	145	160	185	200	225	240	40
1675	1735	30	15	150	165	195	210	240	255	45
1680	1730	25	12,5	145	160	185	200	225	240	40
1680	1740	30	15	150	165	195	210	240	255	45
1685	1735	25	12,5	145	160	185	200	225	240	40
1685	1745	30	15	150	165	195	210	240	255	45
1690	1740	25	12,5	145	160	185	200	225	240	40
1690	1750	30	15	150	165	195	210	240	255	45
1695	1745	25	12,5	145	160	185	200	225	240	40
1695	1755	30	15	150	165	195	210	240	255	45
1700	1750	25	12,5	145	160	185	200	225	240	40
1700	1760	30	15	150	165	195	210	240	255	45
1705	1755	25	12,5	145	160	185	200	225	240	40
1705	1765	30	15	150	165	195	210	240	255	45
1710	1760	25	12,5	145	160	185	200	225	240	40
1710	1770	30	15	150	165	195	210	240	255	45
1715	1765	25	12,5	145	160	185	200	225	240	40
1715	1775	30	15	150	165	195	210	240	255	45
1720	1770	25	12,5	145	160	185	200	225	240	40

CARCOTEX/SP - DIMENSIONAL TABLE

The dimensional table is referred to the standard metric sizes in split version.

H¹ or H²: alternative standard housing lengths. By machining the male adapter other housing lengths are achievable. As alternative an additional back-up ring can be used to get a different housing length.

Other dimensions, imperial sizes or endless seals are available. Pls. contact our sales office for the endless version or for a non-listed size.

Ød	ØD	A	b	1+2+1		1+3+1		1+4+1		N
				H ¹	H ²	H ¹	H ²	H ¹	H ²	
1720	1780	30	15	150	165	195	210	240	255	45
1725	1775	25	12,5	145	160	185	200	225	240	40
1725	1785	30	15	150	165	195	210	240	255	45
1730	1780	25	12,5	145	160	185	200	225	240	40
1730	1790	30	15	150	165	195	210	240	255	45
1735	1785	25	12,5	145	160	185	200	225	240	40
1735	1795	30	15	150	165	195	210	240	255	45
1740	1790	25	12,5	145	160	185	200	225	240	40
1740	1800	30	15	150	165	195	210	240	255	45
1745	1795	25	12,5	145	160	185	200	225	240	40
1745	1805	30	15	150	165	195	210	240	255	45
1750	1800	25	12,5	145	160	185	200	225	240	40
1750	1810	30	15	150	165	195	210	240	255	45
1755	1805	25	12,5	145	160	185	200	225	240	40
1755	1815	30	15	150	165	195	210	240	255	45
1760	1810	25	12,5	145	160	185	200	225	240	40
1760	1820	30	15	150	165	195	210	240	255	45
1765	1815	25	12,5	145	160	185	200	225	240	40
1765	1825	30	15	150	165	195	210	240	255	45
1770	1820	25	12,5	145	160	185	200	225	240	40
1770	1830	30	15	150	165	195	210	240	255	45
1775	1825	25	12,5	145	160	185	200	225	240	40
1775	1835	30	15	150	165	195	210	240	255	45
1780	1830	25	12,5	145	160	185	200	225	240	40
1780	1840	30	15	150	165	195	210	240	255	45
1785	1835	25	12,5	145	160	185	200	225	240	40
1785	1845	30	15	150	165	195	210	240	255	45
1790	1840	25	12,5	145	160	185	200	225	240	40
1790	1850	30	15	150	165	195	210	240	255	45
1795	1845	25	12,5	145	160	185	200	225	240	40
1795	1855	30	15	150	165	195	210	240	255	45
1800	1850	25	12,5	145	160	185	200	225	240	40
1800	1860	30	15	150	165	195	210	240	255	45
1805	1865	30	15	150	165	195	210	240	255	45
1810	1870	30	15	150	165	195	210	240	255	45
1815	1875	30	15	150	165	195	210	240	255	45
1820	1880	30	15	150	165	195	210	240	255	45
1825	1885	30	15	150	165	195	210	240	255	45
1830	1890	30	15	150	165	195	210	240	255	45
1835	1895	30	15	150	165	195	210	240	255	45
1840	1900	30	15	150	165	195	210	240	255	45
1845	1905	30	15	150	165	195	210	240	255	45
1850	1910	30	15	150	165	195	210	240	255	45
1855	1915	30	15	150	165	195	210	240	255	45
1860	1920	30	15	150	165	195	210	240	255	45
1865	1925	30	15	150	165	195	210	240	255	45
1870	1930	30	15	150	165	195	210	240	255	45
1875	1935	30	15	150	165	195	210	240	255	45
1880	1940	30	15	150	165	195	210	240	255	45
1885	1945	30	15	150	165	195	210	240	255	45

CARCOTEX/SP - DIMENSIONAL TABLE

The dimensional table is referred to the standard metric sizes in split version.

H¹ or H²: alternative standard housing lengths. By machining the male adapter other housing lengths are achievable. As alternative an additional back-up ring can be used to get a different housing length.

Other dimensions, imperial sizes or endless seals are available. Pls. contact our sales office for the endless version or for a non-listed size.

Ød	ØD	A	b	1+2+1		1+3+1		1+4+1		N
				H ¹	H ²	H ¹	H ²	H ¹	H ²	
1890	1950	30	15	150	165	195	210	240	255	45
1895	1955	30	15	150	165	195	210	240	255	45
1900	1960	30	15	150	165	195	210	240	255	45
1905	1965	30	15	150	165	195	210	240	255	45
1910	1970	30	15	150	165	195	210	240	255	45
1915	1975	30	15	150	165	195	210	240	255	45
1920	1980	30	15	150	165	195	210	240	255	45
1925	1985	30	15	150	165	195	210	240	255	45
1930	1990	30	15	150	165	195	210	240	255	45
1935	1995	30	15	150	165	195	210	240	255	45
1940	2000	30	15	150	165	195	210	240	255	45
1945	2005	30	15	150	165	195	210	240	255	45
1950	2010	30	15	150	165	195	210	240	255	45
1955	2015	30	15	150	165	195	210	240	255	45
1960	2020	30	15	150	165	195	210	240	255	45
1965	2025	30	15	150	165	195	210	240	255	45
1970	2030	30	15	150	165	195	210	240	255	45
1975	2035	30	15	150	165	195	210	240	255	45
1980	2040	30	15	150	165	195	210	240	255	45
1985	2045	30	15	150	165	195	210	240	255	45
1990	2050	30	15	150	165	195	210	240	255	45
1995	2055	30	15	150	165	195	210	240	255	45
2000	2060	30	15	150	165	195	210	240	255	45
2005	2065	30	15	150	165	195	210	240	255	45
2010	2070	30	15	150	165	195	210	240	255	45
2015	2075	30	15	150	165	195	210	240	255	45
2020	2080	30	15	150	165	195	210	240	255	45
2025	2085	30	15	150	165	195	210	240	255	45
2030	2090	30	15	150	165	195	210	240	255	45
2035	2095	30	15	150	165	195	210	240	255	45
2040	2100	30	15	150	165	195	210	240	255	45
2045	2105	30	15	150	165	195	210	240	255	45
2050	2110	30	15	150	165	195	210	240	255	45
2055	2115	30	15	150	165	195	210	240	255	45
2060	2120	30	15	150	165	195	210	240	255	45
2065	2125	30	15	150	165	195	210	240	255	45
2070	2130	30	15	150	165	195	210	240	255	45
2075	2135	30	15	150	165	195	210	240	255	45
2080	2140	30	15	150	165	195	210	240	255	45
2085	2145	30	15	150	165	195	210	240	255	45
2090	2150	30	15	150	165	195	210	240	255	45
2095	2155	30	15	150	165	195	210	240	255	45
2100	2160	30	15	150	165	195	210	240	255	45
2105	2165	30	15	150	165	195	210	240	255	45
2110	2170	30	15	150	165	195	210	240	255	45
2115	2175	30	15	150	165	195	210	240	255	45
2120	2180	30	15	150	165	195	210	240	255	45
2125	2185	30	15	150	165	195	210	240	255	45
2130	2190	30	15	150	165	195	210	240	255	45
2135	2195	30	15	150	165	195	210	240	255	45

CARCOTEX/SP - DIMENSIONAL TABLE

The dimensional table is referred to the standard metric sizes in split version.

H¹ or H²: alternative standard housing lengths. By machining the male adapter other housing lengths are achievable. As alternative an additional back-up ring can be used to get a different housing length.

Other dimensions, imperial sizes or endless seals are available. Pls. contact our sales office for the endless version or for a non-listed size.

Ød	ØD	A	b	1+2+1		1+3+1		1+4+1		N
				H ¹	H ²	H ¹	H ²	H ¹	H ²	
2140	2200	30	15	150	165	195	210	240	255	45
2145	2205	30	15	150	165	195	210	240	255	45
2150	2210	30	15	150	165	195	210	240	255	45
2155	2215	30	15	150	165	195	210	240	255	45
2160	2220	30	15	150	165	195	210	240	255	45